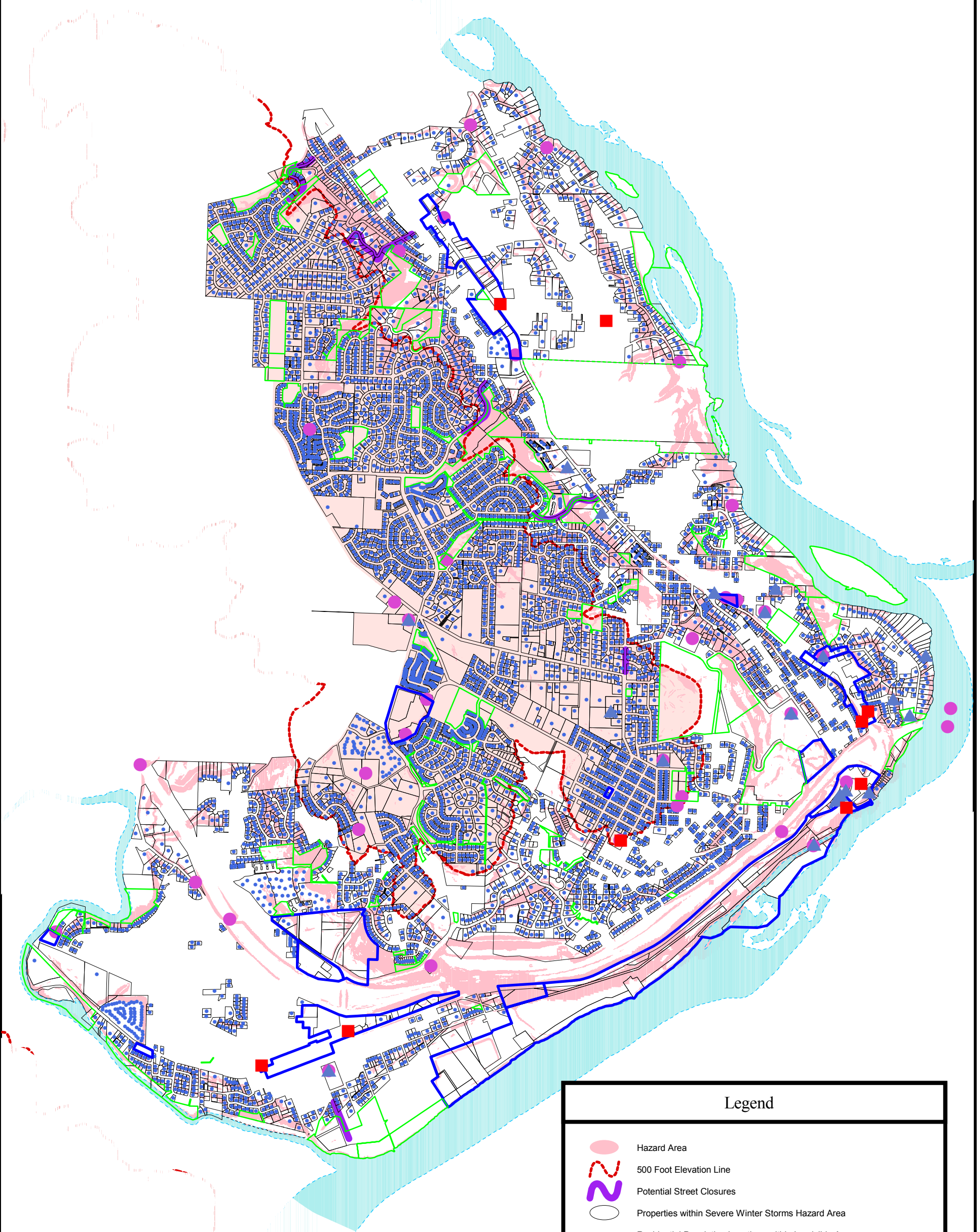


Snow and Ice Vulnerability Analysis



Legend

- Hazard Area
- 500 Foot Elevation Line
- Potential Street Closures
- Properties within Severe Winter Storms Hazard Area
- Residential Population Locations within Landslide Area
- Assets and Infrastructure within Severe Winter Storms Hazard Area
- Economic Assets within Severe Winter Storms Hazard Area
- Environmental Assets within Severe Winter Storms Hazard Area
- Cultural & Historical Assets within Severe Winter Storms Hazard Area
- Hazardous Material Sites within Severe Winter Storms Hazard Area

This map and other information have been compiled for preliminary and general purposes. They are not intended to be complete and accurate for any other purposes. Specifically, this information is not intended to be complete for purposes of land use restriction, zoning, title, size, and suitability of the property for specific uses.